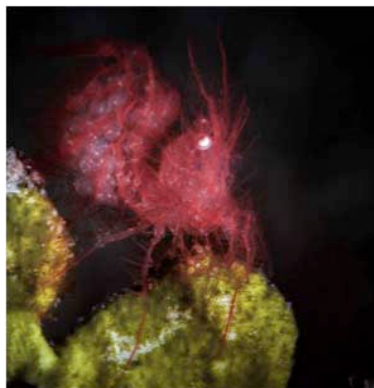
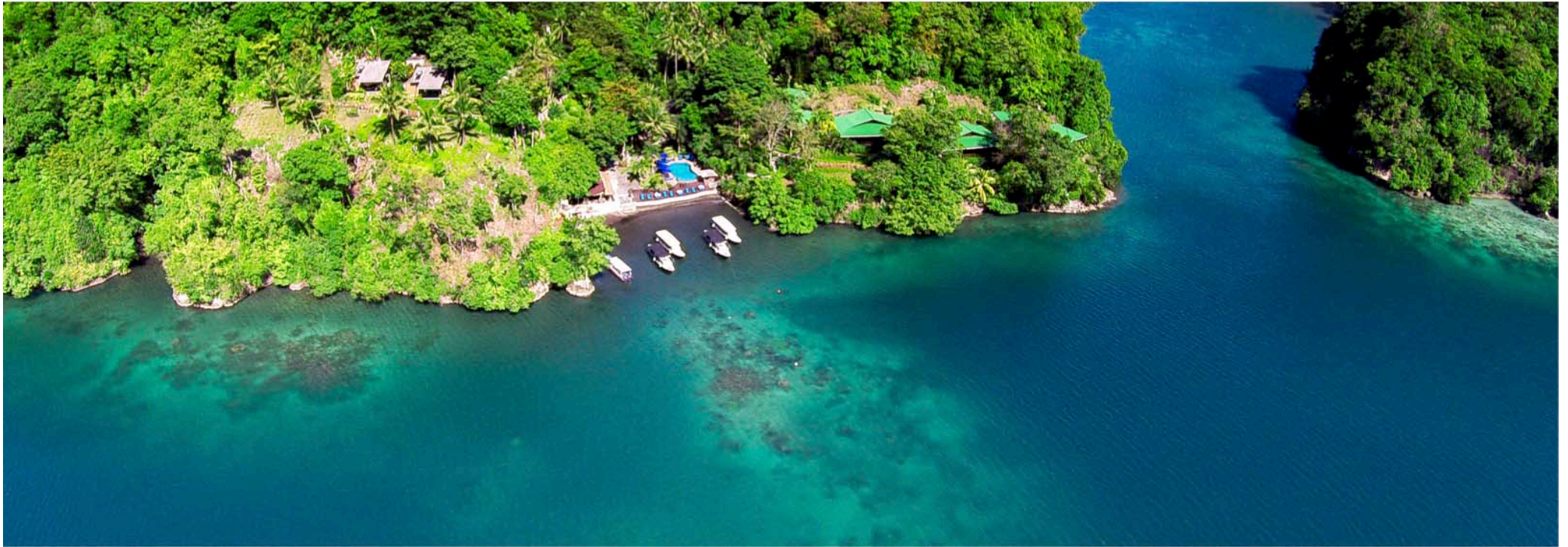


Rates

01 April 2017 - 31 March 2018



All rates are quoted in US\$ and are subject to change

Stay

per adult, per night



1 - 7 Nights

	Double	Single	Additional Adult
Deluxe Ocean View Cottage	190	277	90
Garden View Room	130	192	N/A

Long Stay Bonus from 8th night onwards

	Double	Single	Additional Adult
Deluxe Ocean View Cottage	180	267	90
Garden View Room	120	182	N/A

Additional info

- High-season supplement \$10 per person per night from 24 Dec - 05 Jan

What is included?

- Breakfast, lunch & dinner
- Morning & afternoon snacks
- Free flow mineral water
- Free flow brewed coffee & tea
- Wi-Fi throughout the property
- Welcome drink & fruit platter
- 11% government tax

Transfer

per person, per roundtrip transfer



2 or more guests	37
Single guest	55

Additional info

- 24 hour transfers are available at a surcharge of \$10/person/trip (6pm - 8am)
- Transfers are based on Manado/Airport area

Kids & Teens

*per child, per night
if sharing room with adult(s)*



Child Policy

	0-6	6-12
Deluxe Ocean View Cottage	Free of charge	45
Garden View Room	Free of charge	45
Baby-Sitting Service	20	20

Additional info

- Baby-Sitting service is based on a 9 hour day
- Teenagers are charged as adults



Dive



Experience Lembeh your way

	1-18	19+	À La Carte Nitrox
Guided boat dives	50	46	8
Night/mandarin dive surcharge	18	18	8

Special services

•Private guiding / 3 dives	95
•Private boat / 8am - 5pm	200
•Private boat / 8am - 10pm	260
•Large tank / day	10
•Bangka day-trip / boat	250
•Nitrox course / person	225

Additional info

- Each diving day includes one free self-guided house-reef dive
- Private boat services includes private guide, dives are additional
- High-season supplement \$3.5 per dive from 24 Dec - 5 Jan



Photo Center



Courses & Workshops

	Price
•Basic Point & Shoot	120
•Basic DSLR	150
•Advanced Lighting	75
•Workflow / editing	75
•Basic UW video	75
•Advanced UW Video	150
•Critique Session	75
•UW Video Production	300

1:1

Personalized service

Camera Rentals

Type	Model	1 day	4 days	7 days
•Point & Shoot	Canon s120 + flash + macro diopter	35	105	175
•Micro 4/3	Olympus Pen + flash + macro diopter	45	135	225
•DSLR Photo	Nikon D100 / D200 + 2 flashes	80	240	400
•DSLR Photo & Video	Canon 7D MKII + 2 flashes or 2 video lights	150	450	450
•HD Video Camera	Sony HDR-CX550 + 2 Sola 1200	90	270	750

Additional info

- Customized courses & workshops are available on request



Packages

Deluxe Ocean View Cottage
per person



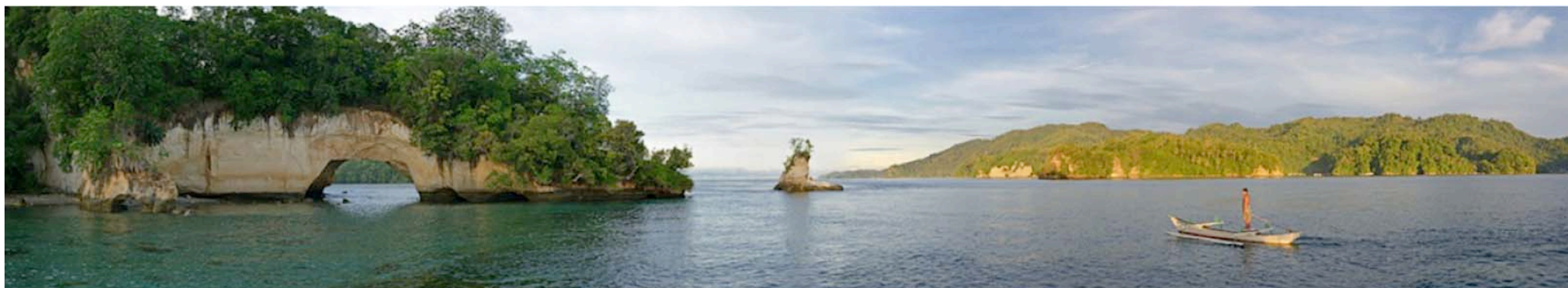
Nights / dives	Double	Single	Extra bed	Nitrox surcharge
3 / 5	857	1136	557	40
4 / 8	1197	1563	797	64
5 / 11	1537	1990	1037	88
6 / 14	1877	2417	1277	112
7 / 17	2217	2844	1517	136
8 / 20	2539	3253	1749	158
9 / 22	2811	3612	1931	172
10 / 24	3083	3971	2113	186
11 / 26	3355	4330	2295	200
12 / 28	3627	4689	2477	214
13 / 30	3899	5048	2659	228
14 / 32	4171	5407	2841	242
15 / 34	4443	5766	3023	256
16 / 36	4715	6125	3205	270

What is included?

- Breakfast, lunch & dinner
- Morning & afternoon snacks
- Free flow mineral water
- Free flow brewed coffee & tea
- Wi-Fi throughout the property
- Welcome drink & fruit platter
- Airport escort service on arrival
- Round-trip transfers
- 11% government tax

Additional info

- Each diving day includes one free self-guided house-reef dive
- All package dives are by boat with a maximum 1:4 guide ratio



Packages

Garden View Room *per person*



Nights / dives	Double	Single	Nitrox surcharge
3 / 5	677	881	40
4 / 8	957	1223	64
5 / 11	1237	1565	88
6 / 14	1517	1907	112
7 / 17	1797	2249	136
8 / 20	2059	2573	158
9 / 22	2271	2847	172
10 / 24	2483	3121	186
11 / 26	2695	3395	200
12 / 28	2907	3669	214
13 / 30	3119	3943	228
14 / 32	3331	4217	242
15 / 34	3543	4491	256
16 / 36	3755	4765	270

What is included?

- Breakfast, lunch & dinner
- Morning & afternoon snacks
- Free flow mineral water
- Free flow brewed coffee & tea
- Wi-Fi throughout the property
- Welcome drink & fruit platter
- Airport escort service on arrival
- Round-trip transfers
- 11% government tax

Additional info

- Each diving day includes one free self-guided house-reef dive
- All package dives are by boat with a maximum 1:4 guide ratio



Details

Group offers & Reservations Policy

Group discounts

Group of 10

= 1 stays and dives for free

Group of 14

= 2 stay and dive for free

*Group of 14 discount is only valid for a min. stay of 6 nights/14 dives for each guest

Individual travellers

Payment policy

Deposit = \$250 per person or 20%, whichever is greater
Final Payment = payment must be received in full 45 days prior to arrival

Cancellation policy

45 days or less = forfeit of all monies received for the booking
46-90 days = deposit will be forfeited
91-180 days = deposit will be refunded minus bank fees and 50% cancellation fee or deposit can be used within 6 months of original arrival date
180 days or more = deposit will be refunded minus bank fees and 15% cancellation fee or deposit can be used within 6 months of original arrival date

Groups

Payment policy

Deposit = \$250 per person or 20%, whichever is greater
Rooming List = rooming list must be received 120 days prior to arrival*
Final Payment = payment must be received in full 60 days prior to arrival.

*All reserved rooms are considered confirmed upon receipt of the Rooming list and you are responsible for all rooms reserved, date changes are not permissible from this date forward. If the above guidelines are not adhered to Lembeh Resort reserves the right to release booked rooms.

Cancellation policy

60 days or less = forfeit of all monies received for the booking
61 – 120 days = deposit will be forfeited
121 days or more = deposit returned minus 15% cancellation fee and minus bank fees

Additional info

- Lembeh Resort requires deposit to secure bookings
- Lembeh Resort will hold a reservation for up to seven days to allow time for deposit transaction
- If deposit is not received within seven days, all reservations will be subject to release for re-sale
- Any unused services for individual and group reservations are non-transferable and non-refundable

