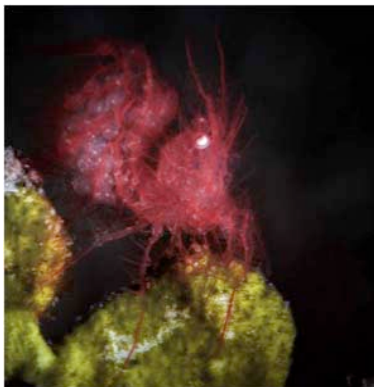


Rates

15 August 2015 - 31 March 2017



All rates are quoted in US\$ and are subject to change

Stay

per adult, per night



1 - 7 Nights

| | Double | Single | Additional Adult |
|---------------------------|--------|--------|------------------|
| Deluxe Ocean View Cottage | 185 | 275 | 90 |
| Garden View Room | 125 | 190 | N/A |

Long Stay Bonus from 8th night onwards

| | Double | Single | Additional Adult |
|---------------------------|--------|--------|------------------|
| Deluxe Ocean View Cottage | 175 | 265 | 90 |
| Garden View Room | 115 | 180 | N/A |

Additional info

- High-season supplement \$10 per person per night from 24 Dec - 05 Jan

What is included?

- Breakfast, lunch & dinner
- Morning & afternoon snacks
- Free flow mineral water
- Free flow brewed coffee & tea
- Wi-Fi throughout the property
- Welcome drink & fruit platter
- 11% government tax

Transfer

per person, per roundtrip transfer



| | |
|------------------|----|
| 2 or more guests | 37 |
| Single guest | 55 |

Additional info

- 24 hour transfers are available at a surcharge of \$10/person/trip (6pm - 8am)
- Transfers are based on Manado/Airport area

Kids & Teens

*per child, per night
if sharing room with adult(s)*



Child Policy

| | 0-6 | 6-12 |
|---------------------------|----------------|------|
| Deluxe Ocean View Cottage | Free of charge | 45 |
| Garden View Room | Free of charge | 45 |
| Baby-Sitting Service | 20 | 20 |

Additional info

- Baby-Sitting service is based on a 9 hour day
- Teenagers are charged as adults



Dive



Experience Lembeh your way

| | 1-18 | 19+ | À La Carte Nitrox |
|-------------------------------|------|-----|-------------------|
| Guided boat dives | 48 | 45 | 9 |
| Night/mandarin dive surcharge | 18 | 18 | 9 |

Special services

| | |
|----------------------------|-----|
| •Private guiding / 3 dives | 95 |
| •Private boat / 8am - 5pm | 200 |
| •Private boat / 8am - 10pm | 260 |
| •Large tank / day | 10 |
| •Bangka day-trip / boat | 200 |
| •Nitrox course / person | 225 |

Additional info

- Each diving day includes one free self-guided house-reef dive
- Private boat services includes private guide, dives are additional
- High-season supplement \$3.5 per dive from 24 Dec - 5 Jan



Photo Center



Courses & Workshops

| | Price |
|----------------------|-------|
| •Basic Point & Shoot | 120 |
| •Basic DSLR | 150 |
| •Advanced Lighting | 75 |
| •Workflow / editing | 75 |
| •Basic UW video | 75 |
| •Advanced UW Video | 150 |
| •Critique Session | 75 |
| •UW Video Production | 300 |

1:1

Personalized service

Camera Rentals

| Type | Model | 1 day | 4 days | 7 days |
|---------------------|---|-------|--------|--------|
| •Point & Shoot | Canon s120 + flash + macro diopter | 35 | 105 | 175 |
| •Micro 4/3 | Olympus Pen + flash + macro diopter | 45 | 135 | 225 |
| •DSLR Photo | Nikon D100 / D200 + 2 flashes | 80 | 240 | 400 |
| •DSLR Photo & Video | Canon 7D MKII + 2 flashes or 2 video lights | 150 | 450 | 450 |
| •HD Video Camera | Sony HDR-CX550 + 2 Sola 1200 | 90 | 270 | 750 |

Additional info

- Customized courses & workshops are available on request



Packages

Deluxe Ocean View Cottage
per person



| Nights / dives | Double | Single | Extra bed | Nitrox surcharge |
|----------------|--------|--------|-----------|------------------|
| 3 / 5 | 832 | 1120 | 547 | 40 |
| 4 / 8 | 1161 | 1539 | 781 | 64 |
| 5 / 11 | 1490 | 1958 | 1015 | 88 |
| 6 / 14 | 1819 | 2377 | 1249 | 112 |
| 7 / 17 | 2148 | 2796 | 1483 | 136 |
| 8 / 20 | 2461 | 3199 | 1711 | 158 |
| 9 / 22 | 2726 | 3554 | 1891 | 172 |
| 10 / 24 | 2991 | 3909 | 2071 | 186 |
| 11 / 26 | 3256 | 4264 | 2251 | 200 |
| 12 / 28 | 3521 | 4619 | 2431 | 214 |
| 13 / 30 | 3786 | 4974 | 2611 | 228 |
| 14 / 32 | 4051 | 5329 | 2791 | 242 |
| 15 / 34 | 4316 | 5684 | 2971 | 256 |
| 16 / 36 | 4581 | 6039 | 3151 | 270 |

What is included?

- Breakfast, lunch & dinner
- Morning & afternoon snacks
- Free flow mineral water
- Free flow brewed coffee & tea
- Wi-Fi throughout the property
- Welcome drink & fruit platter
- Airport escort service on arrival
- Round-trip transfers
- 11% government tax

Additional info

- Each diving day includes one free self-guided house-reef dive
- All package dives are by boat with a maximum 1:4 guide ratio



Packages

Garden View Room *per person*



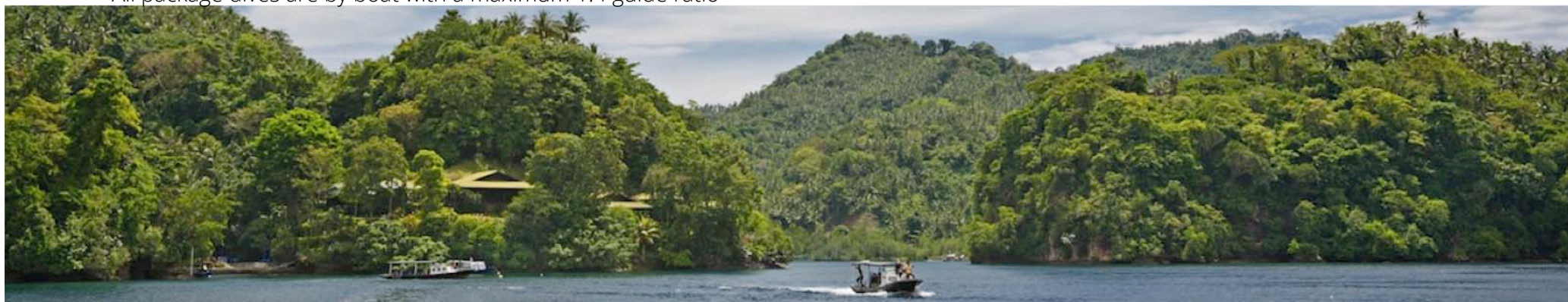
| Nights / dives | Double | Single | Nitrox surcharge |
|----------------|--------|--------|------------------|
| 3 / 5 | 652 | 865 | 40 |
| 4 / 8 | 921 | 1199 | 64 |
| 5 / 11 | 1190 | 1533 | 88 |
| 6 / 14 | 1459 | 1867 | 112 |
| 7 / 17 | 1728 | 2201 | 136 |
| 8 / 20 | 1981 | 2519 | 158 |
| 9 / 22 | 2186 | 2789 | 172 |
| 10 / 24 | 2391 | 3059 | 186 |
| 11 / 26 | 2596 | 3329 | 200 |
| 12 / 28 | 2801 | 3599 | 214 |
| 13 / 30 | 3006 | 3869 | 228 |
| 14 / 32 | 3211 | 4139 | 242 |
| 15 / 34 | 3416 | 4409 | 256 |
| 16 / 36 | 3621 | 4679 | 270 |

What is included?

- Breakfast, lunch & dinner
- Morning & afternoon snacks
- Free flow mineral water
- Free flow brewed coffee & tea
- Wi-Fi throughout the property
- Welcome drink & fruit platter
- Airport escort service on arrival
- Round-trip transfers
- 11% government tax

Additional info

- Each diving day includes one free self-guided house-reef dive
- All package dives are by boat with a maximum 1:4 guide ratio



Details

Group offers & Reservations Policy

Group discounts

Group of 10

= 1 stays and dives for free

Group of 14

= 2 stay and dive for free

*Group of 14 discount is only valid for a min. stay of 6 nights/14 dives for each guest

Individual travellers

Payment policy

| | |
|---------------|---|
| Deposit | = \$250 per person or 20%, whichever is greater |
| Final Payment | = payment must be received in full 45 days prior to arrival |

Cancellation policy

| | |
|------------------|---|
| 45 days or less | = forfeit of all monies received for the booking |
| 46-90 days | = deposit will be forfeited |
| 91-180 days | = deposit will be refunded minus bank fees and 50% cancellation fee or deposit can be used within 6 months of original arrival date |
| 180 days or more | = deposit will be refunded minus bank fees and 15% cancellation fee or deposit can be used within 6 months of original arrival date |

Groups

Payment policy

| | |
|---------------|--|
| Deposit | = \$250 per person or 20%, whichever is greater |
| Rooming List | = rooming list must be received 120 days prior to arrival* |
| Final Payment | = payment must be received in full 60 days prior to arrival. |

*All reserved rooms are considered confirmed upon receipt of the Rooming list and you are responsible for all rooms reserved, date changes are not permissible from this date forward. If the above guidelines are not adhered to Lembbeh Resort reserves the right to release booked rooms.

Cancellation policy

| | |
|------------------|---|
| 60 days or less | = forfeit of all monies received for the booking |
| 61 – 120 days | = deposit will be forfeited |
| 121 days or more | = deposit returned minus 15% cancellation fee and minus bank fees |

Additional info

- Lembbeh Resort requires deposit to secure bookings
- Lembbeh Resort will hold a reservation for up to seven days to allow time for deposit transaction
- If deposit is not received within seven days, all reservations will be subject to release for re-sale
- Any unused services for individual and group reservations are non-transferable and non-refundable

