

# Rates

01 April 2017 - 31 March 2018



All rates are quoted in \$US and are subject to change



# Stay

*per adult, per night*



## 1-7 Nights

Cliffside Suite

Deluxe Ocean View Cottages

Garden View Room

## Double

350

190

130

## Single

525

277

192

## Additional Adult

130

90

N/A

## What is included?

- Breakfast, lunch & dinner
- Morning & afternoon snacks
- Butler service in Cliffside Suite
- Free flow mineral water
- Free flow brewed coffee & tea
- Wi-Fi throughout the property
- Welcome drink & fruit platter
- 11% government tax

## Long Stay, 8<sup>th</sup> night onwards

Cliffside Suite

Deluxe Ocean View Cottages

Garden View Room

## Double

340

180

120

## Single

515

267

182

## Additional Adult

130

90

N/A

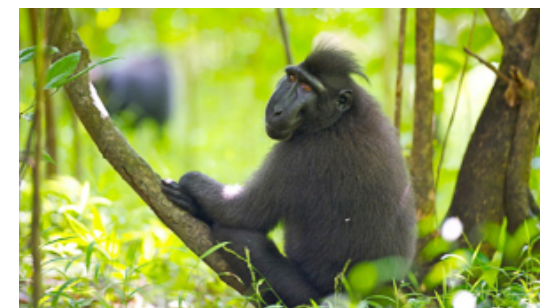
## Additional info

- High-season supplement: \$10 per person per night from 24 Dec - 05 Jan



# Kids & Teens

*If sharing with adult(s)*



## Child Policy

	0-6	6-12
Cliffside Suite	Free of charge	90
Deluxe Ocean View Cottage	Free of charge	45
Garden View Room	Free of charge	45
Baby-Sitting Service	20	20

### Additional info

- Baby-Sitting service is based on a 9 hour day
- Teenagers are charged as adults

# Transfer



Round trip overland transfer	Price
2 or more guests	37
Single guest	55

One-way Boat Transfers	2 divers	3 divers	4 divers	5 divers	6 divers
Bangka Island	225	184	163	150	141
Bunaken/Manado	275	216	188	170	159

### Additional info

- Boat transfers include 2 guided dives w. air
- Boat transfers are only available for combinations with our partner resorts
- Night-time transfers are available at a surcharge of \$10/person/trip (6pm - 8am)



# Dive



## Experience Lembeh Strait

	1-18 Dives	19+ Dives	À La Carte Nitrox
Guided Boat Dives	50	46	8
Night/mandarin dive surcharge	18	18	8

## Special services

	Price
Private guide / 3 dives	95
Private boat / 8am – 5pm	200
Private boat / 8am – 10pm	260
Large tank / day	10
Bangka day-trip / boat	250
Nitrox course / person	225



### Additional info

- Each diving day includes one free self-guided house-reef dive
- Private boat services include private guide, dives are additional
- High-season supplement \$3.5 per dive from 24 Dec - 5 Jan



# Photo Center



## Courses & Workshops

Category	Price
Basic Point & Shoot	120
Basic DSLR	150
Advanced Lighting	75
Workflow / editing	75
Basic UW Video	75
UW Video	150
Production	300
Critique Session	75



## Camera Rentals

Type	Model	1 day	4 days	7 days
Point & Shoot	Canon S120 + flash + macro lens	35	105	175
Micro 4/3	Olympus Pen + flash + macro lens	45	135	225
DSLR Photo	Nikon D100 / D200 + 2 flashes	80	240	400
DSLR Photo & Video	Canon 7D MKII + 2 flashes or 2 video lights	150	450	750
HD Video Camcorder	Sony HDR-CX550 + 2 Sola 1200	90	270	450





# Packages

## Cliffside Suite



Nights / Dives	Double	Single	Extra bed	Nitrox Surcharge
3 / 5	1337	1880	677	40
4 / 8	1837	2555	957	64
5 / 11	2337	3230	1237	88
6 / 14	2837	3905	1517	112
7 / 17	3337	4580	1797	136
8 / 20	3819	5237	2069	158
9 / 22	4251	5844	2291	172
10 / 24	4683	6451	2513	186
11 / 26	5115	7058	2735	200
12 / 28	5547	7665	2957	214
13 / 30	5979	8272	3179	228
14 / 32	6411	8879	3401	242
15 / 34	6843	9486	3623	256
16 / 36	7275	10093	3845	270

### What is included?

- Private butler service
- Breakfast, lunch & dinner
- Morning & afternoon snacks
- Free flow mineral water
- Free flow brewed coffee & tea
- Wi-Fi throughout the property
- Welcome drink & fruit platter
- Airport escort service on arrival
- Round-trip overland transfers
- 11% government tax

### Additional info

- Each diving day includes one free self-guided house-reef dive
- All package dives are by boat with a maximum 1:4 guide ratio



# Packages

## *Deluxe Ocean View Cottage*



Nights / Dives	Double	Single	Extra bed	Nitrox Surcharge
3 / 5	857	1136	557	40
4 / 8	1197	1563	797	64
5 / 11	1537	1990	1037	88
6 / 14	1877	2417	1277	112
7 / 17	2217	2844	1517	136
8 / 20	2539	3253	1749	158
9 / 22	2811	3612	1931	172
10 / 24	3083	3971	2113	186
11 / 26	3355	4330	2295	200
12 / 28	3627	4689	2477	214
13 / 30	3899	5048	2659	228
14 / 32	4171	5407	2841	242
15 / 34	4443	5766	3023	256
16 / 36	4715	6125	3205	270

### What is included?

- Breakfast, lunch & dinner
- Morning & afternoon snacks
- Free flow mineral water
- Free flow brewed coffee & tea
- Wi-Fi throughout the property
- Welcome drink & fruit platter
- Airport escort service on arrival
- Round-trip overland transfers
- 11% government tax

### Additional info

- Each diving day includes one free self-guided house-reef dive
- All package dives are by boat with a maximum 1:4 guide ratio





# Packages

## *Garden View Rooms*



Nights / Dives	Double	Single	Nitrox Surcharge
3 / 5	677	881	40
4 / 8	957	1223	64
5 / 11	1237	1565	88
6 / 14	1517	1907	112
7 / 17	1787	2249	136
8 / 20	2059	2573	158
9 / 22	2271	2847	172
10 / 24	2483	3121	186
11 / 26	2695	3395	200
12 / 28	2907	3669	214
13 / 30	3119	3943	228
14 / 32	3331	4217	242
15 / 34	3543	4491	256
16 / 36	3755	4765	270

### What is included?

- Breakfast, lunch & dinner
- Morning & afternoon snacks
- Free flow mineral water
- Free flow brewed coffee & tea
- Wi-Fi throughout the property
- Welcome drink & fruit platter
- Airport escort service on arrival
- Round-trip overland transfers
- 11% government tax

### Additional info

- Each diving day includes one free self-guided house-reef dive
- All package dives are by boat with a maximum 1:4 guide ratio





# Details

*Group offers & Reservations Policy*

## Group discounts

Group of 10 = 1 will stay and dive for free

Group of 14 = 2 will stay and dive for free

Group of 24 = 3 will stay and dive for free

\*Group offers with more than 1 FOC guest are only valid for a min. stay of 6 nights/14 dives for each guest

## Individual travellers

### Payment policy

Deposit = \$250 per person or 20%, whichever is greater  
Final Payment = payment must be received in full 45 days prior to arrival

### Cancellation policy

45 days or less = forfeit of all monies received for the booking  
46-90 days = deposit will be forfeited  
91-180 days = deposit will be refunded minus bank fees and 50% cancellation fee or deposit can be used within 6 months of original arrival date  
180 days or more = deposit will be refunded minus bank fees and 15% cancellation fee or deposit can be used within 6 months of original arrival date

## Groups

### Payment policy

Deposit = \$250 per person or 20%, whichever is greater  
Rooming List = rooming list must be received 120 days prior to arrival\*  
Final Payment = payment must be received in full 60 days prior to arrival.

\*All reserved rooms are considered confirmed upon receipt of the Rooming list and you are responsible for all rooms reserved, date changes are not permissible from this date forward. If the above guidelines are not adhered to Lembah Resort reserves the right to release booked rooms.

### Cancellation policy

60 days or less = forfeit of all monies received for the booking  
61 – 120 days = deposit will be forfeited  
121 days or more = deposit returned minus 15% cancellation fee and minus bank fees

### Additional Info

- Lembah Resort requires deposit to secure bookings
- Lembah Resort will hold a reservation for up to seven days to allow time for deposit transaction
- If deposit is not received within seven days, all reservations will be subject to release for re-sale
- Any unused services for individual and group reservations are non-transferable and non-refundable