



LEMBEH RESORT

---

Fact Sheet

## TABLE OF CONTENTS

Page	Content
3	Location and Arrival
4	Overland and Boat Transfers Between Resorts
5	Accommodation
6	Cliffside Villa
7	Premium Luxury Cottages
9	Garden View Rooms
10	Resort Facilities, Restaurant, and Bar
11	Spa
12	Pool and Additional Resort Facilities
13	Land Activities and Tours, Dive Center, General Dive Information
14	Dive Team and Dive Trips
15	Dive Boats, Photography, and Videography Facilities, Photo Center
16	Camera Room, Sustainability at Lembeh Resort
17	The Lembeh Foundation
18	Daily Schedule



## LOCATION & ARRIVAL

Lembbeh Resort is an oceanfront property on the west coast of Lembeh Island in North Sulawesi, Indonesia. The resort is nestled in a private cove, surrounded by rainforest, on the banks of the Lembeh Strait.

### AIRPORT ARRIVAL

- The nearest international airport is Sam Ratulangi International Airport (MDC) in Manado.
- It is a 60-minute drive via the toll road and 10 minutes by boat from the airport to the resort. All transfers are in fully air-conditioned vehicles.
- Scoot Air (local carrier of Singapore Airlines) offers direct flights from Singapore to Manado. The flight takes approximately 3 hours and 45 minutes and operates four times a week (Mon, Wed, Fri, Sat).
- There are daily flights from Bali, Jakarta, Makassar in South Sulawesi, Sorong in Raja Ampat and Ambon in Halmahera offered by Garuda Indonesia, Batik Air, Lion Air, Citilink, AirAsia, and TransNusa.
- Upon arrival in Manado Airport, a member of the Lembbeh Resort team will be waiting to greet you outside the arrivals hall and transfer you to the resort.
- A chilled towel and refreshing drink will be provided when you arrive at the airport.
- We recommend all guests use the restroom at the airport before departing to the resort, as public restrooms on the way to the resort are limited.
- Indonesia offers Visa on Arrival (VoA) to citizens of 92 countries, please check that your country is on the list. The VoA fee is IDR 500,000 (equivalent to around 30-35 USD/ EUR). All airport taxes are included in the ticket price.
- Lembbeh Resort provides 24-hour airport transfer services to guests.

## OVERLAND TRANSFERS BETWEEN RESORTS

- Lembbeh Resort can arrange transfers to any other resort in North Sulawesi.

## BOAT TRANSFERS BETWEEN RESORTS

- Transfers by boat are exclusively available between Lembbeh Resort, Murex Resort Manado, Murex Resort Bangka, and Siladen Resort (& Coral Eye Resort). Diving is also available during transfers.
- The transfer price is calculated per boat, not per person. If you join a boat transfer with other guests, the price is shared equally. Boat transfers are to be paid in advance with the exception of transfers to Siladen Resort, which are paid on site.
- Boat transfers are weather dependent.
- Transfer boats have comfortable seating, bathrooms on board, and both shaded and sunny areas. There is ample storage space on board for guests' dive gear and luggage.
- All boats carry drinking water, first aid kits, oxygen, and life jackets.



## ACCOMMODATION

Lembbeh Resort offers a total of 20 cottages and rooms in the following categories:

- 1 Cliffside Villa
- 13 Premium Luxury Cottages
- 6 Garden View Rooms



## STANDARD FEATURES (ALL ROOMS)

- 24-hour electricity
- Air conditioning
- Ensuite bathroom with hot water showers
- Spacious verandas with outdoor seating
- Designed with guests' privacy in mind
- Well-constructed and well maintained
- Complimentary tea, coffee, and drinking water
- Complimentary Wi-Fi
- Complimentary, refillable aluminum water bottle (yours to take home)
- King-size bed (all rooms can be set as double or twin)
- Minibar
- Hairdryer
- In-room safety box
- Desk and chair
- Reading lights
- Room-to-room telephone

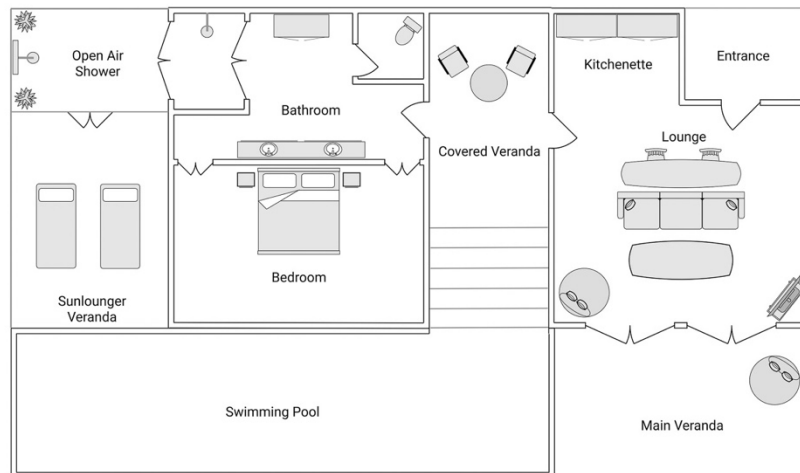
## CLIFFSIDE VILLA

The Cliffside Villa is a luxurious, modern villa which offers privacy and panoramic views of the Lembeh Strait, with stunning sunsets and volcanoes on the horizon. In addition to our standard features, this villa also includes:



- Private infinity pool overlooking the Lembeh Strait (3m x 9m)
- Bedroom with floor-to-ceiling windows, living room, and ensuite bathroom
- Sundeck with sun loungers, shaded patio, and balcony with lounge
- Elegantly decorated bathroom with twin basins
- Indoor and open-air showers
- Flat screen TV and Bluetooth speakers
- French press
- Complimentary cookies
- Bottle of wine
- Complimentary 1-hour massage (per person)
- Private butler service
- Room service

Layout:



## PREMIUM LUXURY COTTAGES

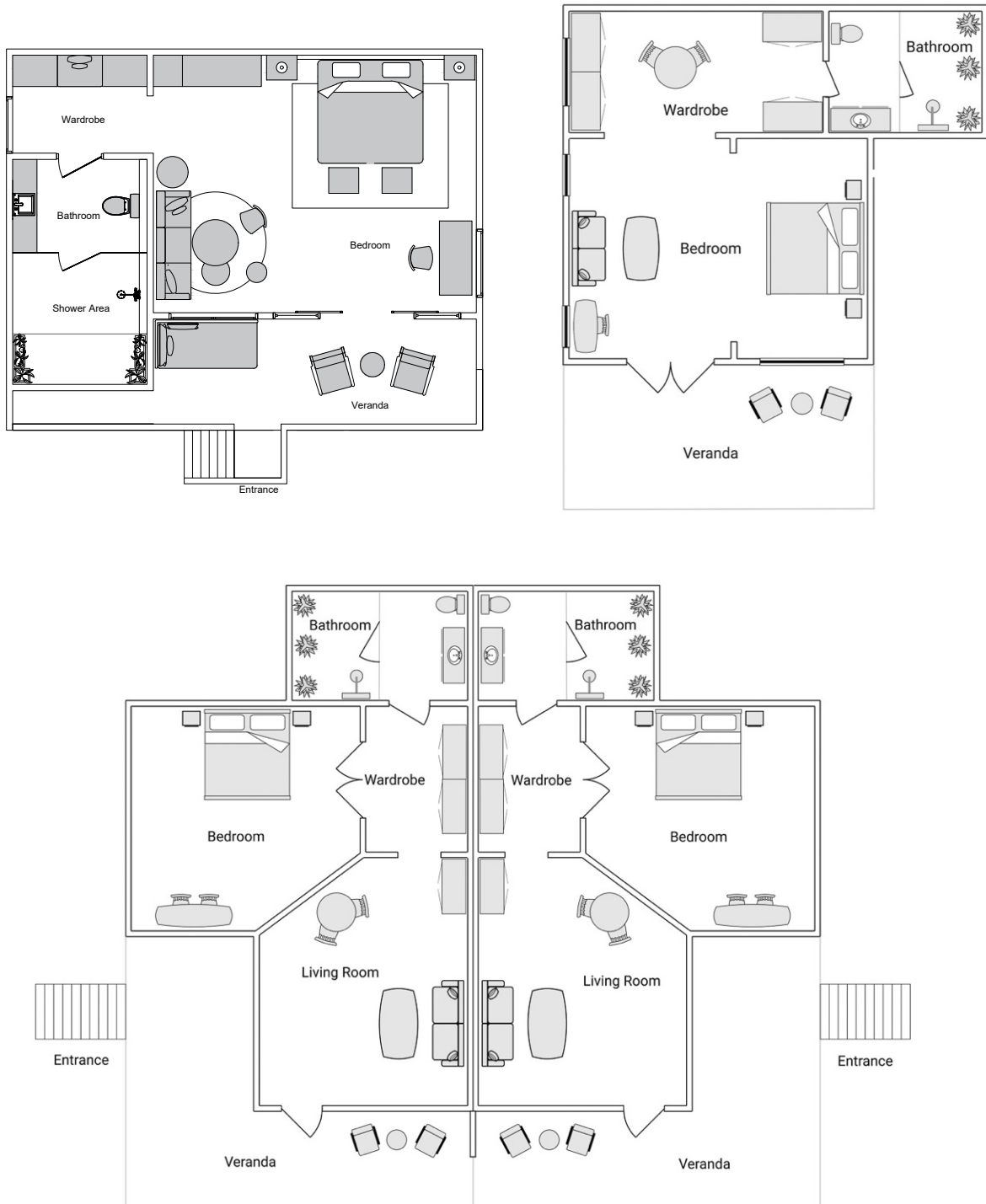
Our beautiful, ocean-facing Premium Luxury Cottages provide stunning views over the Lembeh Strait. Each of these cottages has been constructed using modern materials to achieve comfort, convenience, and understated luxury, while also being more sustainable and energy efficient. The end result is a sense of harmony and balance, with various bespoke touches to add charm and character. Attention to detail has been applied throughout, from ambient lighting to elegant furnishings and ergonomic charging stations. Premium Luxury Cottages are generously proportioned, modern living spaces, imbued with flourishes of Indonesian artwork and design touches. In addition to our standard features, Premium Luxury Cottages also include:



- Individual cottages nestled in tropical gardens overlooking the Strait
- Modern furniture, fixtures, and fittings
- Double glazing and insulating construction for optimum temperature control
- Spacious veranda with outdoor seating
- Views of volcanoes, the sea, and incredible sunsets
- Additional indoor living areas with sofa, table, and chairs
- Generous closet and storage space
- Air conditioning and ceiling fan
- Semi-open-air bathrooms which feature exquisite detailing and rainfall showers
- Space for an extra bed (available upon request)
- Four Premium Luxury Cottages are suite-style (suitable for quad-sharing)
- Premium Luxury Cottages are located on both sides of the central area, with eight cottages accessed behind the pool area, and five cottages found on the elevated side behind the dive center.
- The five cottages on the hillside have been upgraded from the previous Hillside Luxury Cottages and are available from 01 October 2025.
- Guests with mobility issues are encouraged to inform us at time of booking to be allocated an easy to access cottage.



Layout:





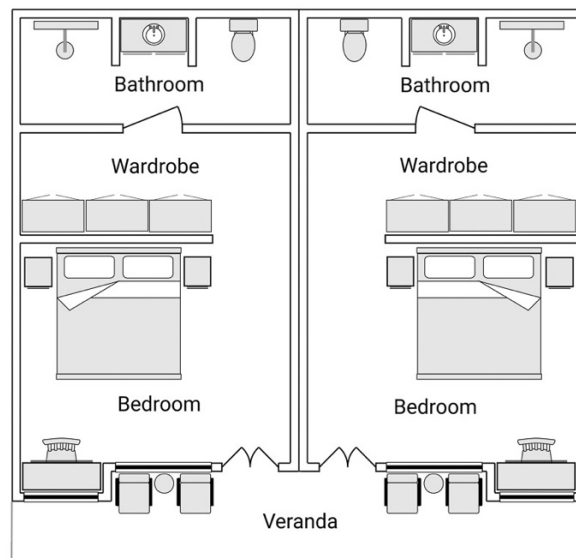
## GARDEN VIEW ROOMS

These rooms offer great value for money and are perfect for single travelers and couples (max. 2 guests per room). The Garden View Rooms are located in two buildings, one of which offers rooms on two floors. Garden View Rooms come with our standard features, plus:



- Fully enclosed, ensuite bathrooms
- Terraces with outdoor seating
- Beautiful tropical garden views
- Located in the central resort area, close to the dive center and restaurant
- Ample closet and storage space

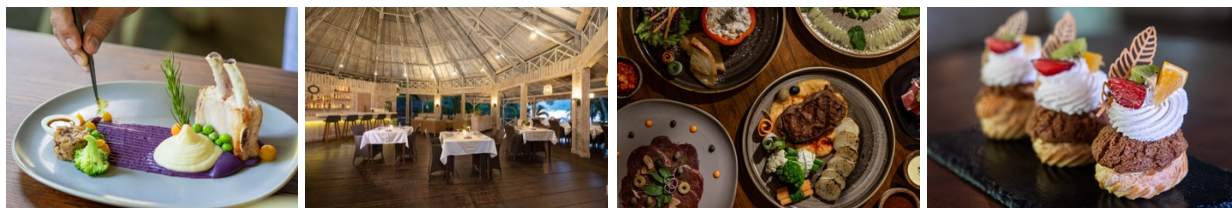
Layout:



## RESORT FACILITIES

### RESTAURANT AND BAR

Lembbeh Resort is a full-board resort – all stays include three daily meals in the restaurant, with snacks and refreshments provided between dives at the pool bar. Complimentary brewed coffee, tea, and water are available throughout the day at the restaurant or pool bar.



- Located in the center of the resort, our open-air restaurant and bar are open every day from 7:00 AM – 10:30 PM.
- Lembbeh Resort's internationally trained chefs offer extensive menu choices, which combine the unmistakable flavors of Asia with a taste of home. We source the freshest local ingredients and the menu changes daily and according to the seasons.
- We strive to ensure every guest can enjoy a diverse and delicious variety of food throughout their stay, regardless of dietary requirements. Our chefs are always happy to prepare bespoke dinner menus catering to special diets, including vegetarian, vegan, lactose intolerant, gluten-free, and any allergies. Special requests are also welcome.
- The bar offers an extensive wine list, along with cold beers and a variety of cocktails, mocktails, long drinks, and soft drinks. Café latte, cappuccino, espresso, long black and decaf coffees are also available at the bar and restaurant.
- Drinks are also served at the poolside bar.
- Several times a month, Lembbeh Resort offers a traditional Indonesian BBQ featuring performances from the local children's Sunday School Choir.
- BREAKFAST: Fresh fruits and juices, homemade breads, cheeses, cold cuts, jams, and savory spreads, Danish pastries, a variety of cereals, eggs (cooked to order), pancakes, French toast, Indonesian breakfast dishes, English and European breakfasts, yogurts, dairy and plant-based milks, and much more.
- LUNCH: A great variety of fresh Indonesian, Western, and Asian dishes, salads, soups, fruits, desserts, and a live cooking station.
- DINNER: Served à la carte (four courses) with a wide selection of local and Western dishes.
- Breakfast and lunch are usually served as a generous buffet, whereas dinner is served à la carte, with all dishes prepared and presented to the highest restaurant standards.

## SPA



Our brand-new spa opened in early 2025, with a completely new building that combines elegant décor with a wide range of wellness and beauty treatments, delivered by our team of experienced professional therapists. This peaceful oasis is the perfect place to recharge after a day of diving or simply enjoy some pampering on a non-diving day. Facilities and features of the spa are outlined below:

- Two treatment rooms with two massage beds each
- Ensuite bathrooms with shower
- Mani-pedi area with a tranquil pond and natural light (skylights and large windows)
- Relaxing lighting after sunset
- Peaceful, earthy colors
- Intricate details and custom artworks

Our extensive spa menu blends traditional Indonesian wellness therapies with modern beauty treatments. Treatments include (amongst others):

- Aromatherapy
- Balinese and Swedish massages
- Warm-stone massages
- Body scrubs
- Our 'Happy Feet' reflexology package
- Facials, including our Classic Facial Refresher and Lembeh Superfood Facial
- Signature, all-in-one rituals combining reflexology, massage, scrub, and facial.

The Spa is open daily from 8:00 AM – 10:30 PM.  
For bookings and inquiries, please contact reception.

## POOL



- Our freshwater pool has a shallow area plus a 2.2-meter-deep end. The pool is centrally located in the resort overlooking the Lembeh Strait.
- Sun loungers with umbrellas and additional seating including cozy outdoor sofas.
- Chairs and tables are available on the sundeck surrounding the pool for enjoying snacks and drinks after diving.
- Pool towels are supplied.

## ADDITIONAL RESORT FACILITIES

- The pool deck has additional seating and sun loungers with views of the Lembeh Strait, the volcanoes on the mainland and stunning sunsets.
- There is a book exchange/ library located in the lobby area.
- A computer is located in the lobby area for guest use.
- Laundry service is available (surcharge applies).
- A large garden area where guests can take a stroll, observe interesting flora and fauna, and sometimes even hear wild tarsiers.
- A giftshop selling a mix of souvenirs and convenient amenities for your stay.



## LAND ACTIVITIES & TOURS

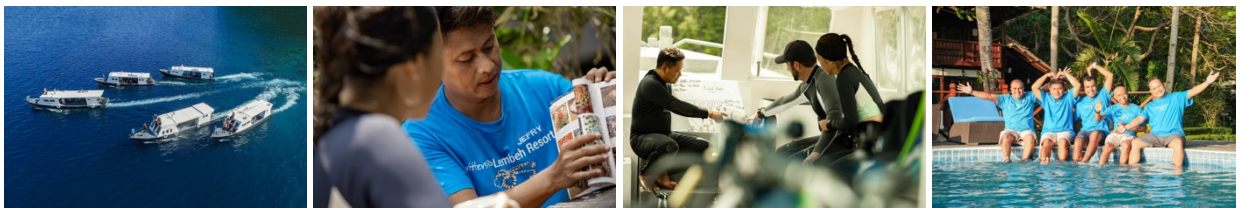


Several land tours are available to book at the reception:

- Tangkoko National Park, where you can see tarsier monkeys, black crested macaques, cuscus bears, rare bird species, and many other species in this beautiful region of protected rainforest.
- Experience the rich culture of North Sulawesi and take a tour of the Minahasan Highlands. Visit traditional markets, villages, Mahawu Volcano, Tondano crater lake, natural geothermal hot springs and a color-changing sulfur lake, WWII Japanese caves, and secluded waterfalls. Our team will create an itinerary based on your interests.
- Local jungle hikes and village tours.
- Morning market tour and cooking classes.
- Mangrove and sunset cruises.
- Tailor-made tours on request.

An experienced, English-speaking tour guide from our resort will accompany all tours.

## DIVE CENTER



Our dive center goes under the name of Critters at Lembbeh Resort.

## GENERAL DIVE INFORMATION

- Normal opening times: 7:30 AM – 5:00 PM.
- INT and DIN tanks are available
- 15ltr / 100CF tanks are available at a surcharge
- 32% Nitrox is available at a surcharge
- PADI courses and experiences are also available and should be prebooked

## DIVE TEAM

Lembeh Resort's team of dive guides have a combined total of over 70,000 dives in the Lembeh Strait. All dive guides go through our rigorous training programs, which include the following:

- Annual rescue training, plus regular refreshers
- Marine biology training with our in-house Marine Biologist
- Photography training with our Photo Pro – hours of classroom study and hundreds of dives, practicing and observing techniques
- Four levels of critter testing & Critter Log training
- Extended training in Bunaken and Bangka

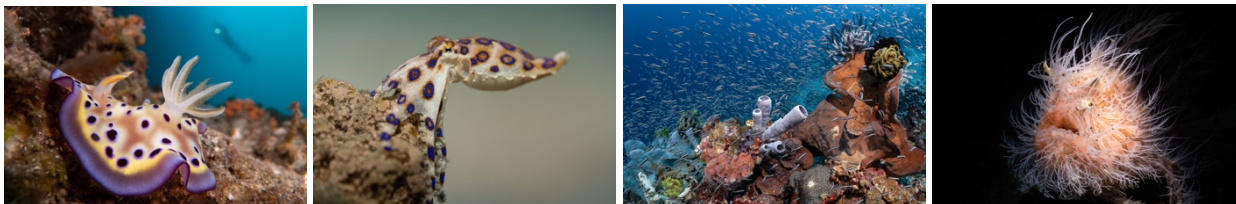
We also have a team of dedicated photography dive guides who have undergone additional hours of classroom theory taught by our Photo Pros and participated in professional workshops.

Our underwater photography dive guides have hundreds of hours of in-water experience – often with some of the world's most esteemed photographers. As a result, they not only understand the technical side of photography, but also have a real passion for the craft – they are always happy to help fellow underwater photographers to get the perfect shot.

For those seeking a more exclusive experience, we also offer private dive guides and camera caddy guides for underwater photographers.

Your dive guide will be by your side on every single dive and lead you to some of Lembeh's most iconic critters.

## DIVE TRIPS



- Three boat dives per day (8:00 AM / 10:45 AM / 2:30 PM). We return to the resort after each dive.
- More than 70 dive sites, most of which are reachable in 2-20mins. Lembeh is world-famous for its incredible muck and critter diving, but pristine coral sites, pinnacles and reefs are also within easy reach.
- Mandarin fish dives depart at 4:45 PM on designated days (min. two divers).
- Boat night dives are possible every day and depart at 6:15 PM (min. two divers).
- House reef dives (shore diving) are always possible, day or night (guided, or unguided with a buddy).

- Bonfire and blackwater dives are a great Lembeh experience and can be arranged for any night. The boat departs at 6:30 PM. Please inquire for the best dates during check-in.
- Two or three dive trips further afield are also available, enabling you to visit the coral reefs of Bangka Island, the north end of the Lembeh Strait, or even circumnavigate Lembeh Island (daytrips include lunch on the boat or a beach, and can be booked on site).

## DIVE BOATS

- All boats are equipped with life jackets, emergency oxygen, first aid equipment, and telephones for emergency communication.
- Drinking water is available on board and fresh fruits are served after every dive.
- Towels are available on board.
- Each boat has purpose-built tank racks, seating areas, toilet, shaded areas, and open areas for those who like the sun.
- Private boats are also available at a surcharge.

## PHOTOGRAPHY & VIDEOGRAPHY FACILITIES

### THE PHOTO CENTER



Our Backscatter-Authorized Photo Center is fully equipped to cater to the most discerning underwater photographers and videographers. Our full-time Photo Pro and team of Photo Assistants teach underwater photography, videography, and editing courses for beginners through to pros. Courses are tailor-made to meet your requirements. The Photo Center team are also available to assist with rental equipment and sales, and are on hand to give advice and recommendations, or to carry out minor repairs.

The Photo Center offers a wide range of accessories for sale and to rent, including strobes, video lights, arms, memory cards, macro lenses, and snoots, etc. Complete rigs, cameras, and housings are also available.

- Opening times: 7:30 AM – 5:00 PM
- A 3D printer is available for custom-made mounts and replacement parts
- Courses can be booked on site or in advance
- Air-conditioned classroom and editing area



## CAMERA ROOM

A spacious and secure camera room is available for guests to store and charge their cameras. Each guest is offered a private workstation with international charging points. Towels, air guns, and extension cables are also available.

- Opening times: 6:30 AM – 10:30 PM (locked overnight)
- CCTV

## SUSTAINABILITY



## LEMBEH RESORT SUSTAINABILITY STATEMENT

Trying to keep our beautiful resort as green and environmentally sustainable as possible is not a small task. We are constantly trying to identify areas in our operations where we can reduce our emissions, along with our usage of plastic, water, and non-renewable energy. This is a never-ending process – we are always exploring new green innovations, revising our methods, and implementing changes.

We firmly believe that sustainability encompasses more than just environmental issues; we work alongside neighbors in local villages to find economically sustainable options which empower all members of the community through education and practical solutions, regardless of age, gender, and ethnicity.

We are committed to saying ‘no’ to single use plastics and products containing palm oil wherever possible. We do not use plastic straws or plastic water bottles, and we ask our suppliers to opt for non-plastic packaging. Aligned with our aim to find sustainable alternatives to single use plastic and palm oil in all of our operations, we have removed all products containing palm oil from our spa and rooms (such as shampoo, shower gel, hand soap, etc.).

Lembeh Resort has long-term water management systems in place and we organize regular beach and underwater cleanups. We have a coral nursery which is maintained by our dive team and marine biologist. We also support local school children who are in need by supplying school uniforms, backpacks, and necessary stationary items. We provide education around sustainability and conservation via the Lembeh Foundation.

## LEMBEH FOUNDATION



Lembbeh Resort is the founding resort member of the Lembbeh Foundation; an independent, registered Indonesian charitable organization which works alongside local communities on Lembbeh Island to provide environmental and economically sustainable solutions to waste management. The core aims of the Lembbeh Foundation are to reduce plastic waste, improve education opportunities and economic benefits, while also improving the health and sustainability of local communities.

The Lembbeh Foundation is currently focusing on two major projects:

- The Trash Bank: This is a waste bank constructed and funded by Lembbeh Foundation, where villagers can take their waste for recycling in return for cash. The aim of this initiative is to reduce the amount of waste on the island, while encouraging local communities to dispose of waste responsibly while benefitting economically.
- The Green Library and Learning Center: Lembbeh Foundation has built a two-storey Learning Center in one of the local villages. The Green Library provides educational materials for children, which introduces them to sustainability through active and fun activities. Green Library activities are conducted by members of the Lembbeh Foundation.

Other activities include coral and mangrove planting, field trips to experience endemic species, snorkel trips to connect with the underwater world, English lessons, beach cleanups, and many more.

If you would like to support the Lembbeh Foundation, either by donating materials or by participating in our ongoing activities, please get in touch. Any contributions would be most welcome.



## DAILY SCHEDULE

Blue = Dive Departure

Purple = Restaurant Service

6:30 AM	Camera room is unlocked
7:00 AM	Breakfast service starts in the restaurant
7:30 AM	Dive Center opens
7:30 AM	Photo Center opens
7:30 AM	Your dive equipment is loaded onto your boat by the dive team
7:45 AM	Nitrox tanks are available for checking
8:00 AM	First dive departs
8:00 AM	Spa opens
9:45 AM	Dive boats return from the first dive
10:45 AM	Second dive departs
12:30 AM	Dive boats return from the second dive
12:30 PM	Lunch service starts in the restaurant
2:00 PM	Lunch service closes
2:30 PM	Third dive departs
4:15 PM	Dive boats return from the third dive
4:45 PM	Boat departs for mandarin fish dive (on certain days only)
5:00 PM	Photo Center closes
6:15 PM	Night dive boat departs
7:00 PM	Dinner service starts in the restaurant
7:45 PM	Night dive boat returns
10:30 PM	Dinner service closes
10:30 PM	Camera room is locked
10:45 PM	Spa closes
10:45 PM	Bar service closes (if guests have retired to their rooms)