



PRICES & BOOKING POLICY

01 April 2023 - 31 March 2024

Experience Lembeh

Lembeh Resort's secluded location on Lembeh Island ensures guests an exclusive and relaxing stay. Tropical gardens and exotic fauna form a natural backdrop while luxury and elegance come as standard.

To make a reservation please simply contact our experienced reservations officers who will get back to you within 24 hours with a detailed package offer.

Diving and snorkelling can be booked in advance or at the resort according to your preference. For land tours, spa treatments, non-diving activities please ask us for our separate price lists.

Our reservation officers will also happily offer assistance with booking domestic Indonesian flights to and from Manado International Airport.

The below rates are all in EUR, and valid for 01 April 2023 - 31 March 2024, subject to change.

www.lembehresort.com | reservations@lembehresort.com



Stay

per guest per night

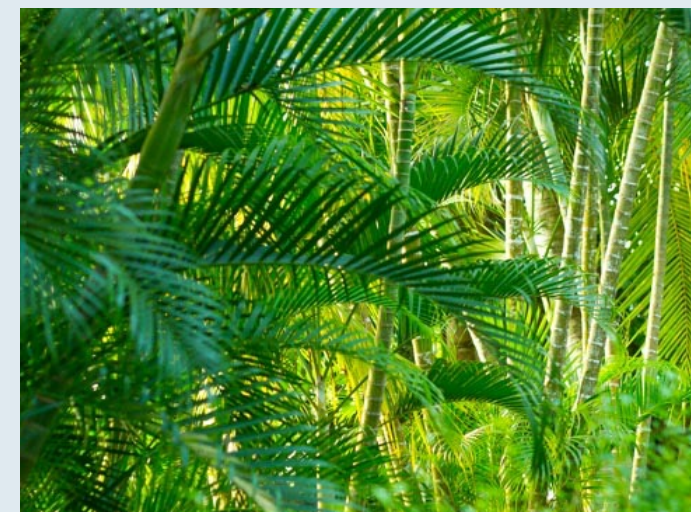
ACCOMMODATION

	Single	Double	Extra Bed
Cliffside Villa	€499	€357	€132
Premium Luxury Cottage	€309	€222	€94
Hillside Luxury Cottage	€273	€196	€94
Garden View Room	€174	€124	N/A

- High season supplement: +€8.50/ night from 24 Dec - 05 Jan.

What's included?

- Breakfast, lunch & dinner
- Morning & afternoon snacks
- Free flow mineral water
- Free flow brewed coffee & tea
- Wi-Fi throughout the property
- Welcome drink & fruits
- All taxes & fees



Kids & Teens

if sharing with adult(s)

CHILD POLICY

	0-6	7-12
Cliffside Villa	Free of charge	€85
Premium Luxury Cottage	Free of charge	€68
Hillside Luxury Cottage	Free of charge	€64
Garden View Room	Free of charge	n/a

- Complimentary nanny service available upon request.
- Teenagers are charged as adults.

Transfers

per person

OVERLAND TRANSFER

Roundtrip Airport Transfer	€66
----------------------------	-----

BOAT TRANSFERS

Bangka Island/ Siladen (Bunaken)/ Manado	Upon request
--	--------------

- Overland transfers are available 24 hours without surcharge.
- Boat transfers include 2 dives per person along the way.
- Boat transfers are only available for combinations with our partner resorts.
- Boat transfer prices decrease according to the number of persons joining.

What activities can the kids do?

- Guided day & night Snorkelling
- Try Scuba-Diving (min. 8 years)
- Village & School Excursions
- Baking & Cooking Classes
- Jungle & Volcano Tours
- Mangrove & Reef Snorkelling
- Kayaking

Land Tours & Spa

Beside onsite spa treatments, a wide range of land tours is available to explore the rich culture and breathtaking nature North Sulawesi has to offer. Please contact us for details.



Scuba Diving



LEMBEH STRAIT & NORTH LEMBEH

	Air	Nitrox
Guided Boat Dives	€53	€59
Supplement for Night/Mandarinfish Dives	€17	€23
Blackwater/ Bonfire Dives	€70	€76

SPECIAL SERVICES

Private Guide	€113 per day
Private Boat	€300 per day
15 ltr / 100c ft. tanks	€9 per day

DAY TRIPS BEYOND LEMBEH STRAIT

Bangka Island	€350/Boat - shared between participants
Eastern Lembeh	€300/Boat - shared between participants

- Receive one complimentary self-guided house reef dive for each diving day with min. 2 pre-booked boat dives.
- Private guide and private boat pricing is based on 3 dives per day from 8am-4.30pm. Dives are not included.
- Day-trips beyond Lembeh Strait do not include the dives.
- High-season supplement: €3 per dive from 24 Dec - 05 Jan.

Coral Reefs in Lembeh?

Lembeh is not only world famous for its critter diving. The coral reefs surrounding Lembeh Island are healthy, vibrantly colourful and teeming with life.

Our fast and comfortable dive boats are perfect for those who wish to go further afield to explore the secluded reefs and exhilarating off-shore pinnacles of Lembeh and Bangka Island.

Dive Courses & Snorkelling



GUIDED BOAT SNORKELLING

With own/ rental equipment

Per trip

€30 per person

RENTAL EQUIPMENT

One day

Two or more days

Full Scuba Equipment w. computer

€39/ day

€34 / day

Regulator

€9/ day

€7 / day

BCD

€9/ day

€7 / day

Mask & Snorkel

€5 / day

€5/ day

Open-heel fins w. boots

€5/ day

€5 / day

Wetsuit

€7/ day

€7/ day

Torch

€7 / day

€7/ day

DIVE COURSES

A wide selection of PADI beginner, continuing education and speciality courses are available.

Please contact us for details.

Photo Center



COURSES & WORKSHOPS

Basic underwater macro photography
Basic underwater macro Videography
Introduction to workflow / editing
Critique sessions
Tailor made courses

Price	Duration
€162	2 hours
€81	1 hour
€81	1 hour
€81	1 hour
€81	1 hour

EQUIPMENT RENTAL

Complete underwater compact camera sets are available, as well as a large selection of components such as strobes and video lights, snoot sets, trays, arms and clamps, macro lenses, flip-mounts, etc. Please inquire for more details.

What is the Photo Center?

The Backscatter Authorized Photo Center is the one-stop-shop for all your photo and video needs. With a full time expat Photo Pro and team to answer your questions and give guidance you'll be shooting your best possible images and videos in no time.

Rental equipment, a large selection of spare parts and even a 3D printer for manufacturing custom-made parts is available. In case of equipment malfunctions or floods the Photo Pro and team can swiftly help to get you back on the track of producing amazing underwater imagery.

Packages

Cliffside Villa



Nights	Dives	Single	Double	Extra Bed	Nitrox Surcharge
4	8	€2,486	€1,918	€1,018	€48
5	11	€3,144	€2,434	€1,309	€66
6	14	€3,802	€2,950	€1,600	€84
7	17	€4,460	€3,466	€1,891	€102
8	20	€5,118	€3,982	€2,182	€120
9	22	€5,723	€4,445	€2,420	€132
10	24	€5,328	€4,908	€2,658	€144
11	26	€6,933	€5,371	€2,896	€156
12	28	€7,538	€5,834	€3,134	€168
13	30	€8,143	€6,297	€3,372	€180
14	32	€8,748	€6,760	€3,610	€192
15	34	€9,353	€7,223	€3,848	€204

What's included?

- Roundtrip airport transfers
- Private swimming-pool
- Breakfast, lunch & dinner
- Morning & afternoon snacks
- Butler Service
- One hour massage
- One bottle of wine
- Free flow mineral water
- Free flow brewed coffee & tea
- Wi-Fi throughout the property
- Welcome drink & fruits
- All taxes & fees
- 1 free unguided house reef dive per day

- The above are sample packages and can be adjusted. Please contact us for a tailor-made offer.

Packages

Premium Luxury Cottages



Nights	Dives	Single	Double	Extra Bed	Nitrox Surcharge
4	8	€1,726	€1,378	€866	€48
5	11	€2,194	€1,759	€1,119	€66
6	14	€2,662	€2,140	€1,372	€84
7	17	€3,130	€2,521	€1,625	€102
8	20	€3,598	€2,902	€1,878	€120
9	22	€4,013	€3,230	€2,078	€132
10	24	€4,428	€3,558	€2,278	€144
11	26	€4,843	€3,886	€2,478	€156
12	28	€5,258	€4,214	€2,678	€168
13	30	€5,573	€4,542	€2,878	€180
14	32	€6,088	€4,870	€3,078	€192
15	34	€6,503	€5,198	€3,278	€204

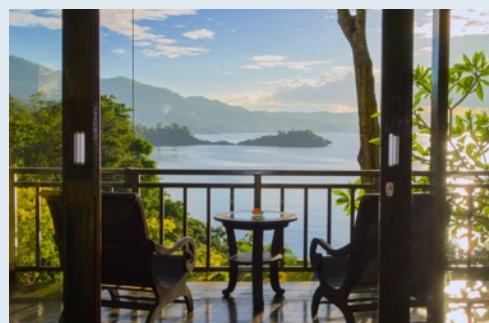
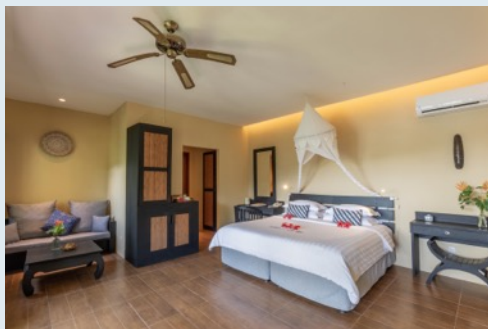
What's included?

- Roundtrip airport transfers
- Breakfast, lunch & dinner
- Morning & afternoon snacks
- Free flow mineral water
- Free flow brewed coffee & tea
- Wi-Fi throughout the property
- Welcome drink & fruits
- All taxes & fees
- 1 free unguided house reef dive per day

- The above are sample packages and can be adjusted. Please contact us for a tailor-made offer.

Packages

Hillside
Luxury Cottages



Nights	Dives	Single	Double	Extra Bed	Nitrox Surcharge
4	8	€1,582	€1,274	€866	€48
5	11	€2,014	€1,829	€1,119	€66
6	14	€2,446	€1,984	€1,372	€84
7	17	€2,878	€2,339	€1,625	€102
8	20	€3,310	€2,694	€1,878	€120
9	22	€3,689	€2,996	€2,078	€132
10	24	€4,068	€3,298	€2,278	€144
11	26	€4,447	€3,600	€2,478	€156
12	28	€4,826	€3,902	€2,678	€168
13	30	€5,205	€4,204	€2,878	€180
14	32	€5,584	€4,506	€3,078	€192
15	34	€5,963	€4,808	€3,278	€204

What's included?

- Roundtrip airport transfers
- Breakfast, lunch & dinner
- Morning & afternoon snacks
- Free flow mineral water
- Free flow brewed coffee & tea
- Wi-Fi throughout the property
- Welcome drink & fruits
- All taxes & fees
- 1 free unguided house reef dive per day

- The above are sample packages and can be adjusted. Please contact us for a tailor-made offer.

Packages

Garden View Room



Nights	Dives	Single	Double	Nitrox Surcharge
4	8	€1,186	€986	€48
5	11	€1,519	€1,269	€66
6	14	€1,852	€1,552	€84
7	17	€2,185	€1,835	€102
8	20	€2,518	€2,118	€120
9	22	€2,798	€2,348	€132
10	24	€3,078	€2,578	€144
11	26	€3,358	€2,808	€156
12	28	€3,638	€3,038	€168
13	30	€3,918	€3,268	€180
14	32	€4,198	€3,498	€192
15	34	€4,478	€3,728	€204

What's included?

- Roundtrip airport transfers
- Breakfast, lunch & dinner
- Morning & afternoon snacks
- Free flow mineral water
- Free flow brewed coffee & tea
- Wi-Fi throughout the property
- Welcome drink & fruits
- All taxes & fees
- 1 free unguided house reef dive per day

- The above are sample packages and can be adjusted. Please contact us for a tailor-made offer.

Details

Terms & Conditions

Group discounts

Group of 10 = 1 will stay and dive for free

Group of 14 = 2 will stay and dive for free

*Free of charge stays are based on accommodation in Garden View Rooms

*The "Group of 14 offer" is only valid for stays of minimum 6 nights

Individual Travellers

PAYMENT POLICY

Deposit payment = €250 per person or 20% of total invoice, whichever is greater.

Full payment = Due 45 days prior to arrival.

CANCELLATION POLICY

<45 days = Full amount as per invoice is forfeit.

46-90 days = Deposit is forfeit.

91-180 days = 50% of deposit (minus bank fees) will be refunded or full deposit may be used within 6 months.

>180 days = 85% of deposit (minus bank fees) will be refunded or full deposit may be used within 6 months.

Group Bookings

PAYMENT POLICY

Deposit payment = €250 per person or 20% of total invoice, whichever is greater

Rooming list = Due 120 days prior to arrival

Full payment = Due 60 days prior to arrival

CANCELLATION POLICY

<60 days = Full amount as per invoice is forfeit

60-120 days = Deposit is forfeit

120-240 days = 50% of deposit (minus bank fees) will be refunded or full deposit may be used within 6 months.

>240 days = Deposit (minus bank fees) will be refunded

- Lembeh Resort strongly recommend guests to purchase travel insurance with cancellation-cover
- Lembeh Resort requires a deposit to guarantee rooms
- Unused services are non-transferable and non-refundable
- Ask about our Peace of Mind booking policy