



Prices & Booking Policy

01 April 2024 - 31 March 2025

- USD -

Experience Lembeh

Lembeh Resort's secluded location on Lembeh Island ensures guests an exclusive and relaxing stay. Tropical gardens and exotic fauna form a natural backdrop while luxury and elegance come as standard.

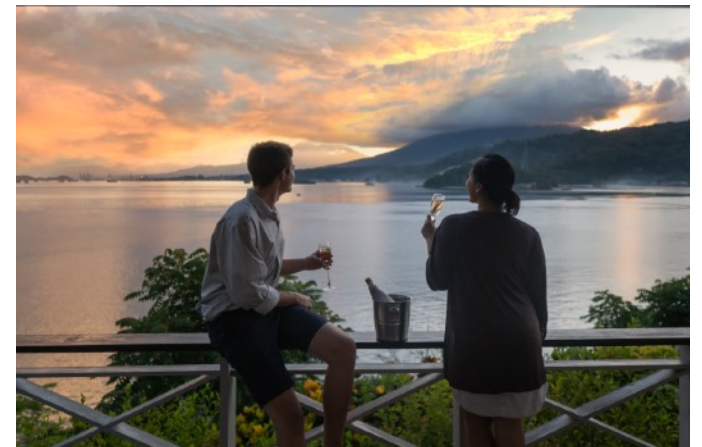
To make a reservation please simply contact our experienced reservations officers who will get back to you within 24 hours with a detailed package offer.

Diving and snorkeling can be booked in advance or at the resort according to your preference. For land tours, spa treatments, non-diving activities please ask us for our separate price lists.

Our reservation officers will also happily offer assistance with booking domestic Indonesian flights to and from Manado International Airport.

The below rates are all in USD, and valid for 01 April 2024 - 31 March 2025, subject to change.

www.lembehresort.com | reservations@lembehresort.com



Stay

Per guest per night

| Accommodations | Double | Single | Extra Bed |
|-------------------------|--------|--------|-----------|
| Cliffside Villa | \$450 | \$630 | \$175 |
| Premium Luxury Cottage | \$280 | \$395 | \$125 |
| Hillside Luxury Cottage | \$240 | \$335 | \$118 |
| Garden View Room | \$150 | \$210 | N/A |

- High-season supplement: +\$12 / night from 24 Dec - 05 Jan.

What's included?

- Breakfast, lunch & dinner
- Morning & afternoon snacks
- Free flow mineral water
- Free flow brewed coffee & tea
- Wi-Fi throughout the property
- Welcome drink & fruits
- All taxes & fees



Kids & Teens

If sharing with adult(s)

CHILD POLICY

Cliffside Villa

Premium Luxury Cottage

Hillside Luxury Cottage

0-6

Free of charge

Free of charge

Free of charge

7-12

\$110

\$90

\$80

- Complimentary nanny service available upon request.
- Teenagers are charged as adults.

What activities can the kids do?

- Guided day & night-snorkelling
- Try scuba-diving (min. 8 years)
- Village & School Excursions
- Baking & cooking classes
- Jungle & Volcano Tours
- Mangrove & Reef snorkeling
- Kayaking

Transfers

Per person

OVERLAND TRANSFER

Roundtrip Airport Transfer

\$80

BOAT TRANSFER

Bangka Island/ Siladen (Bunaken)/ Manado

Upon request

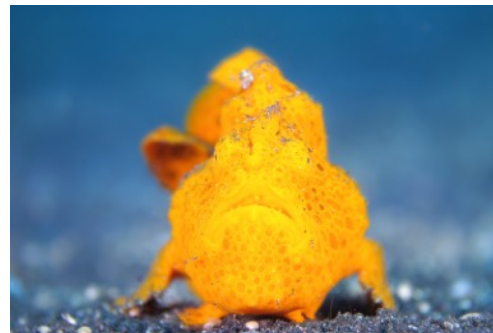
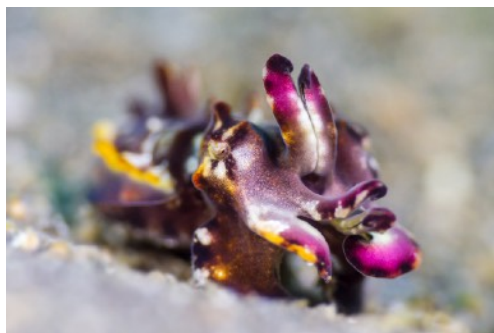
- Overland transfers are available 24 hours without surcharge.
- Boat-transfers must include 2 dives per person along the way.
- Boat-transfers are only available for combinations with our partner resorts.
- Boat transfer prices decrease according to the number of persons joining.

Land Tours & Spa

Beside onsite spa treatments, a wide range of land tours is available to explore the rich culture and breathtaking nature North Sulawesi has to offer. Please contact us for details.



Scuba Diving



LEMBEH STRAIT & NORTH LEMBEH

| | Air | Nitrox |
|---------------------------|------|--------|
| Guided boat dives | \$58 | \$65 |
| Night/Mandarin-fish dives | \$76 | \$83 |
| Blackwater/Bonfire dive | \$79 | \$86 |

SPECIAL SERVICES

| | |
|-------------------------|---------------|
| Private guide | \$120 per day |
| Private boat | \$336 per day |
| 15 ltr / 100c ft. tanks | \$11 per day |

DAY TRIPS BEYOND LEMBEH STRAIT

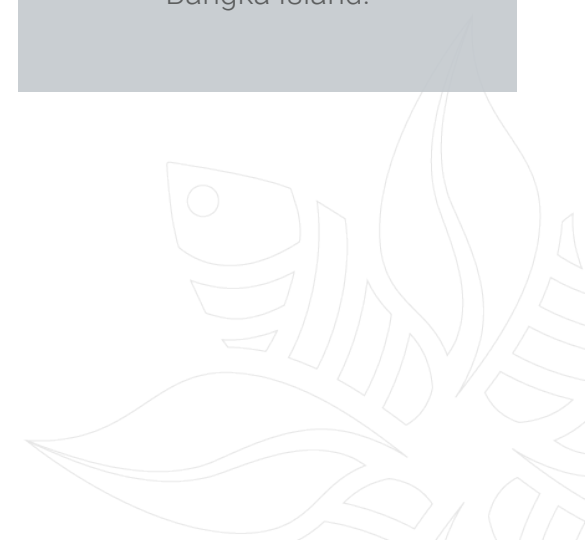
| | |
|----------------|--|
| Bangka Island | \$394/Boat - shared between participants |
| Eastern Lembeh | \$336/Boat - shared between participants |

- Receive one complimentary self-guided house reef dive with air for each diving day with 2 paid boat dives.
- Private guide and private boat pricing is based on 3 dives per day from 8am-5pm. Dives are not included.
- Day-trips beyond Lembeh Strait do not include the dives
- High-season supplement: +\$3.50 per dive from 24 Dec - 05 Jan.

Coral Reefs in Lembeh?

Lembeh is not only world famous for its critter diving. The coral reefs surrounding Lembeh Island are healthy, vibrantly colourful and teeming with life.

Our fast and comfortable dive boats are perfect for those who wish to go further afield to explore the secluded reefs and exhilarating off-shore pinnacles of Lembeh and Bangka Island.



Dive Courses & Snorkelling



GUIDED BOAT SNORKELING

With own/rental equipment

Per trip

\$34 per person

RENTAL EQUIPMENT

Price

Full Scuba Equipment w. computer

\$20 / day

Regulator

\$7 / day

BCD

\$7 / day

Mask & Snorkel

\$4 / day

Fins

\$4 / day

Wetsuit

\$5 / day

Dive computer

\$15 / day

Torch

\$8 / day

-

DIVE COURSES

A wide selection of PADI beginner, continuing education and speciality courses are available. Please contact us for details.

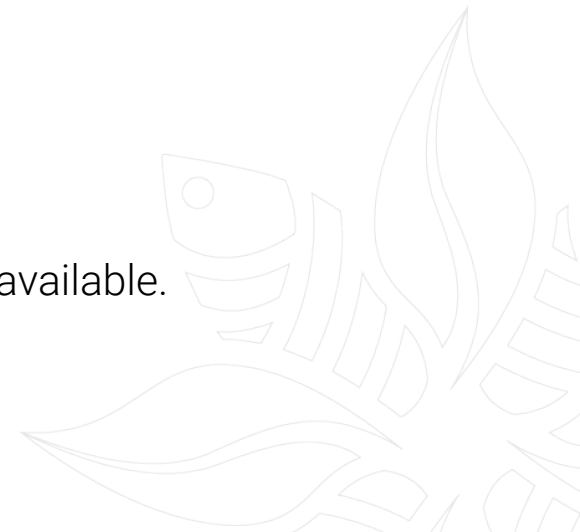


Photo-Center



COURSES & WORKSHOPS

Basic underwater macro photography
Basic Underwater Macro Videography
Introduction to workflow / editing
Critique sessions
Tailor made courses

| Price | Duration |
|-------|----------|
| \$198 | 2 hours |
| \$99 | 1 hour |
| \$99 | 1 hour |
| \$99 | 1 hour |
| \$99 | 1 hour |

EQUIPMENT RENTAL

Complete underwater compact camera sets are available, as well as a large selection of components such as strobes and video lights, snoot sets, trays, arms and clamps, macro lenses, flip-mounts, etc. Please inquire for more details.

What is the Photo Center?

The Backscatter Authorized Photo Center is the one-stop-shop for all your photo and video needs. With a full time expat Photo Pro and team to answer your questions and give guidance you'll be shooting your best possible images and videos in no time.

Rental equipment, a large selection of spare parts and even a 3D printer for manufacturing custom-made parts is available. In case of equipment malfunctions or floods the Photo Pro and team can swiftly help to get you back on the track of producing amazing underwater imagery.

Packages

Cliffside Villa

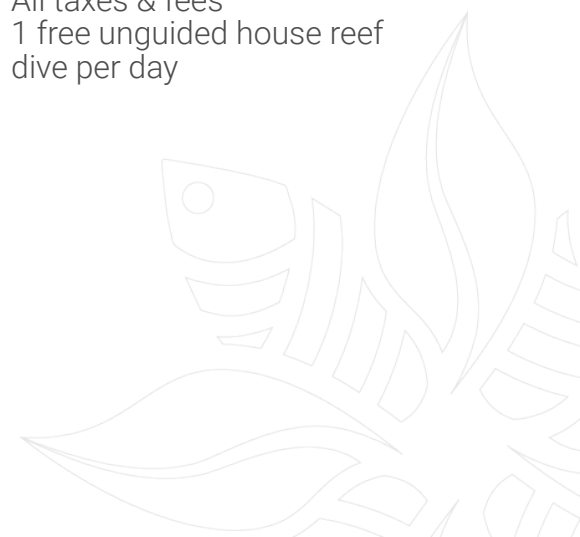


| Nights | Dives | Double | Single | Extra Bed | Nitrox Surcharge |
|--------|-------|---------|----------|-----------|------------------|
| 4 | 8 | \$2.344 | \$3.064 | \$1.244 | \$56 |
| 5 | 11 | \$2.968 | \$3.868 | \$1.593 | \$77 |
| 6 | 14 | \$3.592 | \$4.672 | \$1.942 | \$98 |
| 7 | 17 | \$4.216 | \$5.476 | \$2.291 | \$119 |
| 8 | 20 | \$4.840 | \$6.280 | \$2.640 | \$140 |
| 9 | 22 | \$5.406 | \$7.026 | \$2.931 | \$154 |
| 10 | 24 | \$5.972 | \$7.772 | \$3.222 | \$168 |
| 11 | 26 | \$6.538 | \$8.518 | \$3.513 | \$182 |
| 12 | 28 | \$7.104 | \$9.264 | \$3.804 | \$196 |
| 13 | 30 | \$7.670 | \$10.010 | \$4.095 | \$210 |
| 14 | 32 | \$8.236 | \$10.756 | \$4.386 | \$224 |
| 15 | 34 | \$8.802 | \$11.502 | \$4.677 | \$238 |

What's included?

- Roundtrip airport transfers
- Private swimming-pool
- Breakfast, lunch & dinner
- Morning & afternoon snacks
- Butler Service
- One hour massage
- One bottle of wine
- Free flow mineral water
- Free flow brewed coffee & tea
- Wi-Fi throughout the property
- Welcome drink & fruits
- All taxes & fees
- 1 free unguided house reef dive per day

* The above are sample packages and can be adjusted. Please contact us for a tailor-made offer.



Packages

Premium Luxury Cottages



| Nights | Dives | Double | Single | Extra Bed | Nitrox Surcharge |
|--------|-------|---------|---------|-----------|------------------|
| 4 | 8 | \$1.664 | \$2.124 | \$1.044 | \$56 |
| 5 | 11 | \$2.118 | \$2.693 | \$1.343 | \$77 |
| 6 | 14 | \$2.572 | \$3.262 | \$1.642 | \$98 |
| 7 | 17 | \$3.026 | \$3.831 | \$1.941 | \$119 |
| 8 | 20 | \$3.480 | \$4.400 | \$2.240 | \$140 |
| 9 | 22 | \$3.876 | \$4.911 | \$2.481 | \$154 |
| 10 | 24 | \$4.272 | \$5.422 | \$2.722 | \$168 |
| 11 | 26 | \$4.668 | \$5.933 | \$2.963 | \$182 |
| 12 | 28 | \$5.064 | \$6.444 | \$3.204 | \$196 |
| 13 | 30 | \$5.460 | \$6.955 | \$3.445 | \$210 |
| 14 | 32 | \$5.856 | \$7.466 | \$3.686 | \$224 |
| 15 | 34 | \$6.252 | \$7.977 | \$3.927 | \$238 |

What's included?

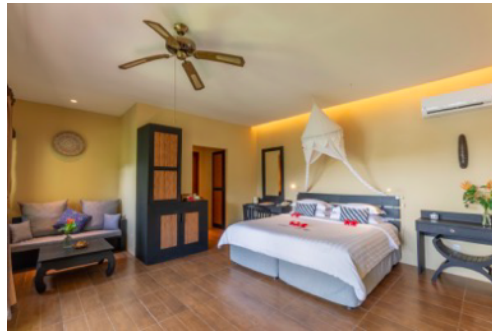
- Roundtrip airport transfers
- Breakfast, lunch & dinner
- Morning & afternoon snacks
- Free flow mineral water
- Free flow brewed coffee & tea
- Wi-Fi throughout the property
- Welcome drink & fruits
- All taxes & fees
- 1 free unguided house reef dive per day

* The above are sample packages and can be adjusted. Please contact us for a tailor-made offer.



Packages

Hillside Luxury Cottage



| Nights | Dives | Double | Single | Extra Bed | Nitrox Surcharge |
|--------|-------|---------|---------|-----------|------------------|
| 4 | 8 | \$1.504 | \$1.884 | \$1.016 | \$56 |
| 5 | 11 | \$1.918 | \$2.393 | \$1.308 | \$77 |
| 6 | 14 | \$2.332 | \$2.902 | \$1.600 | \$98 |
| 7 | 17 | \$2.746 | \$3.411 | \$1.892 | \$119 |
| 8 | 20 | \$3.160 | \$3.920 | \$2.184 | \$140 |
| 9 | 22 | \$3.516 | \$4.371 | \$2.418 | \$154 |
| 10 | 24 | \$3.872 | \$4.822 | \$2.652 | \$168 |
| 11 | 26 | \$4.228 | \$5.273 | \$2.886 | \$182 |
| 12 | 28 | \$4.584 | \$5.724 | \$3.120 | \$196 |
| 13 | 30 | \$4.940 | \$6.175 | \$3.354 | \$210 |
| 14 | 32 | \$5.296 | \$6.626 | \$3.588 | \$224 |
| 15 | 34 | \$5.652 | \$7.077 | \$3.822 | \$238 |

What's included?

- Roundtrip airport transfers
- Breakfast, lunch & dinner
- Morning & afternoon snacks
- Free flow mineral water
- Free flow brewed coffee & tea
- Wi-Fi throughout the property
- Welcome drink & fruits
- All taxes & fees
- 1 free unguided house reef dive per day

* The above are sample packages and can be adjusted. Please contact us for a tailor-made offer.



Packages

Garden View Room

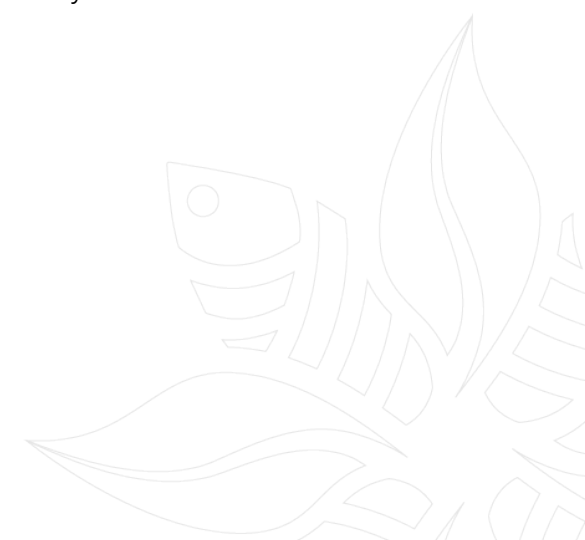


| Nights | Dives | Double | Single | Nitrox Surcharge |
|--------|-------|---------|---------|------------------|
| 4 | 8 | \$1.144 | \$1.384 | \$56 |
| 5 | 11 | \$1.468 | \$1.768 | \$77 |
| 6 | 14 | \$1.792 | \$2.152 | \$98 |
| 7 | 17 | \$2.116 | \$2.536 | \$119 |
| 8 | 20 | \$2.440 | \$2.920 | \$140 |
| 9 | 22 | \$2.706 | \$3.246 | \$154 |
| 10 | 24 | \$2.972 | \$3.572 | \$168 |
| 11 | 26 | \$3.238 | \$3.898 | \$182 |
| 12 | 28 | \$3.504 | \$4.224 | \$196 |
| 13 | 30 | \$3.770 | \$4.550 | \$210 |
| 14 | 32 | \$4.036 | \$4.876 | \$224 |
| 15 | 34 | \$4.302 | \$5.202 | \$238 |

What's included?

- Roundtrip airport transfers
- Breakfast, lunch & dinner
- Morning & afternoon snacks
- Free flow mineral water
- Free flow brewed coffee & tea
- Wi-Fi throughout the property
- Welcome drink & fruits
- All taxes & fees
- 1 free unguided house reef dive per day

* The above are sample packages and can be adjusted. Please contact us for a tailor-made offer.



Details

Terms & Conditions

Group discounts

Group of 10 = 1 will stay and dive for free
Group of 14 = 2 will stay and dive for free

*Free of charge stays are based on accommodation in Garden View Rooms

*The "Group of 14 offer" is only valid for stays of minimum 6 nights

Individual Travellers

PAYMENT POLICY

Deposit payment = \$250 per person or 20% of total invoice, whichever is greater.
Full payment = Due 45 days prior to arrival.

CANCELLATION POLICY

<45 days = Full amount as per invoice is forfeit.
46-90 days = Deposit is forfeit.
91-180 days = 50% of deposit will be refunded or full deposit may be used within 6 months.
>180 days = 15% of deposit will be refunded or full deposit may be used within 6 months.

Group bookings

PAYMENT POLICY

Deposit payment = \$250 per person or 20% of total invoice, whichever is greater
Rooming list = Due 120 days prior to arrival
Full payment = Due 60 days prior to arrival

CANCELLATION POLICY

<60 days = Full amount as per invoice is forfeit
60-120 days = Deposit is forfeit
120-240 days = 50% of deposit (minus bank fees) will be refunded or full deposit may be used within 6 months.
>240 days = Deposit (minus bank fees) will be refunded

- Lembbeh Resort strongly recommend guests to purchase travel insurance with cancellation-cover
- Lembbeh Resort requires a deposit to guarantee rooms
- Unused services are non-transferable and non-refundable